



# LPX

Our all-new LPX is a multi-purpose loader-processor built to work in tight spaces. With a high, wide saw box and large capacity, you get amped-up deck processing and impressive log handling to keep timber moving – taking your productivity to the extreme.

## OVERVIEW

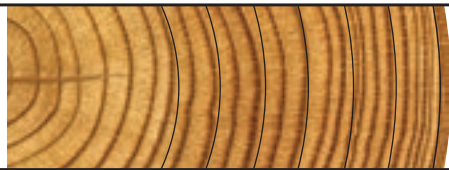
Processing roadside; processing under a yarder, clearing the chute; loading and processing where space is limited.

## APPLICATIONS

Processing  
Loading/processing  
Shovel logging

## RECOMMENDED RANGE

0 25 50 75 100 125 CM



0 5 10 15 20 25 30 35 40 45 50 INCH

**8-132 cm / 3-52 in.**

## SPECS



**4070 kg / 8,973 lb.**  
Net Weight



**35 MPa / 5,076 psi**  
Max Hydraulic Pressure



**1219 mm / 48 in.**  
Max Delimit Opening



**1321 mm / 52 in.**  
Max Feed Roller Opening



**780 mm / 31 in.**  
Max Sawing Capacity



**35+ metric ton**  
Carrier Size

**SPECIFICATIONS**

<b>DIMENSIONS</b>	
Height, to boom pin (processing) (mm/in.)	2850 / 112
Width, head open (mm/in.)	2492 / 98.1
<b>WEIGHT</b>	
Base weight standard rotator, excluding link and some options (kg/lb.)	4070 / 8,973
<b>ROTATION</b>	
	360 continuous
	Single or twin rotate option
<b>DELIMBING</b>	
Delimiting knives	1 fixed front, 2 cast upper moving
Maximum delimb opening - wide cast knives (mm/in.)	1219 / 48
Grapple area (ft <sup>2</sup> , m <sup>2</sup> )	3.79 / 0.35
<b>DRIVE</b>	
Quantity of drive rollers	3
Motor cc - option 1 (drive, fixed)	1048, 630 (high speed)
Maximum feed speed - option 1 (m/s, ft/s)	5 / 16
Maximum roller opening (mm/in.)	1321 / 52
Minimum feed arm diameter (mm/in.)	80 / 3.15
<b>TOP SAW</b>	
Type and pitch	Waratah 3/4" manual tension
	Saw prox std; transducer w/saw limit on AT - option
Maximum cut diameter (mm/in.)	711 / 28
Length of saw bar (mm/in.)	813 / 32
Chain type (in.)	3/4"
Top saw motor displacement	20cc std; 32cc - option
<b>MAIN/FELLING SAW</b>	
Type and pitch	Waratah auto-tension 3/4"
	Saw prox std; transducer w/saw limit on AT - option
Maximum cut diameter (mm/in.)	780 / 31
Length of saw bar (mm/in.)	1016 / 40
Chain type (in.)	3/4"
Saw motor	50cc (10t sprocket)
	63cc (11t sprocket) - option
Oil tank capacity (L/gal.)	22 / 5.8

**SPECIFICATIONS**

<b>HYDRAULIC SYSTEM</b>	
Maximum operating pressure (MPa/psi)	35 / 5,076
Maximum pump capacity (L/min., gal./min.)	400 / 106
Optimum flow (L/min., gal./min.)	360 @ 15 MPa / 95 @ 2,176 psi
<b>CARRIER RANGE</b>	
Tracked (metric tons)	35+
<b>CONTROL AND MEASURING SYSTEM</b>	
	TimberRite H-16
<b>OPTIONAL EQUIPMENT</b>	
Second rotator motor	
Optional top saw motor sizes	
Auto-tension topsaw	
Saw limit for topsaw (with AT unit)	
Optional main saw motor sizes	
Measuring wheel options (gear-cut coarse, serrated, shouldered)	
Debarking fixed, outer feed rollers	
Steel thumbnail fixed, outer feed rollers	
Non-aggressive fixed roller	
Alpine outer feed rollers	
Second diameter sensor	
Find end sensor	
Cradle for common stick/dipper widths	
Converter pin	
Dog-bone link	
Snow hole guarding	
Pressure sensors (M, CD, T)	
Carrier hydraulic filter kit	
Toolbox	
Uptime kit	