



624HX

As part of the all-new HX line, the new 624HX is faster, smarter and stronger than ever before. This powerhouse delivers impressive log picking, feeding and handling with unmatched uptime – taking your productivity to the extreme.

OVERVIEW

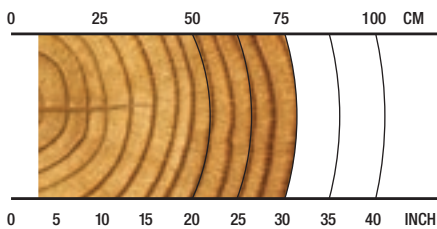
Harvesting, roadside or deck processing

APPLICATIONS

Hardwood, softwood harvesting or processing

Late or final thinnings/clear felling

RECOMMENDED RANGE



8-76 cm / 3-30 in.

SPECS

-  **3990 kg / 8,796 lb.**
Net Weight
-  **35 MPa / 5,076 psi**
Max Hydraulic Pressure
-  **1025 mm / 40 in.**
Max Delimit Opening
-  **1100 mm / 44 in.**
Max Feed Roller Opening
-  **825 mm / 32.5 in.**
Max Sawing Capacity
-  **35+ metric tons**
Carrier Size

SPECIFICATIONS

SPECIFICATIONS	
DIMENSIONS	
Height, to boom pin (harvest position) (mm/in.)	3264 / 128.5
Width, head open (mm/in.)	2285 / 90
WEIGHT	
Base weight standard rotator, excluding link and some options (kg/lb.)	3990 / 8,796
ROTATION	
	360 continuous, stump treatment option
	Single or twin rotate option
DELIMBING	
Delimiting knives	1 fixed/floating front, 2 cast upper moving
Maximum delimb opening standard cast knives (mm/in.)	1025 / 40
Maximum delimb opening - wide cast knives (mm/in.)	1187 / 47 (option)
DRIVE	
Quantity of drive rollers	3
Motor cc - option 1 (drive, fixed)	1048, 630 (high speed)
Maximum feed speed - option 1 (m/s, ft/s)	5 / 16
Motor cc - option 2 (drive, fixed)	1395, 800 (high torque)
Maximum feed speed - option 2 (m/s, ft/s)	4 / 13
Maximum roller opening (mm/in.)	1100 / 44
Minimum feed arm diameter (mm/in.)	80 / 3.15
TOP SAW	
Type and pitch	Waratah 3/4" manual tension
	Saw prox std; transducer w/saw limit on AT - option
Maximum cut diameter (mm/in.)	560 / 22
Length of saw bar (mm/in.)	711 / 28
Chain type (in.)	3/4"
Top saw motor displacement	20cc std; 32cc - option
MAIN/FELLING SAW	
Type and pitch	Waratah auto-tension 3/4"
	Saw prox std; transducer w/saw limit on AT - option
Maximum cut diameter (mm/in.)	825 / 32.5
Length of saw bar (mm/in.)	1016 / 40
Chain type (in.)	3/4"
Saw motor	50cc (10t sprocket)
	63cc (11t sprocket) - option
Oil tank capacity (L/gal.)	22 / 5.8

SPECIFICATIONS

SPECIFICATIONS	
HYDRAULIC SYSTEM	
Maximum operating pressure (MPa/psi)	35 / 5,076
Maximum pump capacity (L/min., gal./min.)	400 / 106
Optimum flow (L/min., gal./min.)	360 @ 15 MPa / 95 @ 2,176 psi
CARRIER RANGE	
Tracked (metric tons)	35+
CONTROL AND MEASURING SYSTEM	
	TimberRite H-16
OPTIONAL EQUIPMENT	
	Second rotator motor
	Fixed or floating top/front knife
	Optional top saw motor sizes
	Auto-tension topsaw
	Saw limit for topsaw (with AT unit)
	Optional main saw motor sizes
	High-capacity upper delimb
	Measuring wheel options (gear-cut coarse, serrated, shouldered)
	Debarking fixed, outer feed rollers
	Steel thumbnail fixed, outer feed rollers
	Non-aggressive fixed roller
	Alpine outer feed rollers
	Feed motors - high speed / high torque (see cc above)
	Second diameter sensor
	Find end sensor
	Cradle for common stick/dipper widths
	Converter pin
	Dog-bone link
	Color marking LED 1 color
	Color marking SED 3 color
	Color marking SED & LED
	Stump treatment (less tank and pump)
	Harvesting guarding
	Snow hole guarding
	Pressure sensors (M, CD, T)
	Carrier hydraulic filter kit
	Toolbox
	Uptime kit

