

# H216



Whether you're in hardwood, softwood or debarking, the agile H216 is perfectly equipped to handle the task. Its simple design with excellent feed power, delimiting, and large cut capacity provide productive tree harvesting.

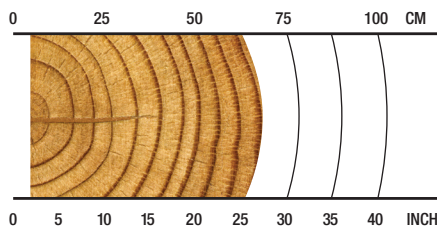
## OVERVIEW

Harvesting and processing in late thinnings or regeneration harvesting; productive in crooked or straight wood.

## APPLICATIONS

Hardwood harvesting  
Softwood harvesting  
Multi-tree harvesting  
Debarking

## RECOMMENDED RANGE



**5-65 cm / 1.9-25.6 in.**

## SPECS



**1495 kg / 3,296 lb.**

Weight (option dependent, without rotator, link, topsaw or multi-tree handling)



**28 MPa / 4,061 psi  
35 MPa / 5,076 psi**

Max Hydraulic Requirements (Option dependent)



**650 mm / 25.6 in.**

Max Upper Delimb Opening



**700 mm / 27.6 in.**

Max Feed Roller Opening



**750 mm / 29.5 in.**

Max Cutting Capacity



**18-25 metric ton**

Carrier Size



**16-25 metric ton**

Carrier Size

## H216 HARVESTING HEAD

### SPECIFICATIONS

DIMENSIONS	
Width, head open [mm/in.]	1695 / 66.7
Width, head closed [mm/in.]	1335 / 52.6
Height without rotator and link [mm/in.]	1845 / 72.6
WEIGHT	
Option dependent, without rotator, link, topsaw or multi-tree handling [kg/lb.]	1495 / 3296
DELIMBING	
Delimiting knives	4 moving, 1 fixed
Delimiting diameter, tip to tip [mm/in.]	450 / 17.7
Maximum opening, upper knives [mm/in.]	650 / 25.6
Maximum opening, lower knives [mm/in.]	760 / 29.9
FEEDING	
Quantity of drive rollers	2
Motor cc - option 1 (single speed)	702-cc motors
Gross feed force [kN]	33.6 (@ 350 bar, 320 lpm)
Feed speed [m/s]	5.6
Motor cc - option 2 (single speed)	780-cc motors
Gross feed force [kN]	29.8 (@ 280 bar, 318 lpm)
Feed speed [m/s]	5
Gross feed force [kN]	37.3 (@ 350 bar, 320 lpm)
Feed speed [m/s]	5
Motor cc - option 3 (single speed)	857-cc motors
Gross feed force [kN]	32.8 (@ 280 bar, 318 lpm)
Feed speed [m/s]	4.5
Gross feed force [kN]	41.0 (@ 350 bar, 320 lpm)
Feed speed [m/s]	4.6
Motor cc - option 4 (single speed)	934-cc motors
Gross feed force [kN]	35.7 (@ 280 bar, 318 lpm)
Feed speed [m/s]	4.2
Motor cc - option 5 (multi-speed)	1043/624-cc motors
Gross feed force [kN]	39.9 (@ 280 bar, 318 lpm)
Feed speed [m/s]	3.7 / 5.1
Maximum roller opening [mm/in.]	700 / 27.6
Minimum diameter [mm/in.]	50 / 2

### SPECIFICATIONS

BUTT / FELLING SAW	
Standard Saw	SuperCut 100S with auto chain tensioning
Maximum cut diameter [mm/in.]	750 / 29.5
Length of saw bar [mm/in.]	900 / 35.4
Chain type [mm/in.]	10 / 0.404
Chain speed [m/s, ft/s]	40 / 131
Saw motor	32cc
Bar oil tank capacity [L/gal.]	14 / 3.7
TOP SAW	
Maximum cut diameter [mm/in.]	400 / 15.7
Length of saw bar [mm/in.]	600 / 23.6
Chain type [mm/in.]	10 / 0.404
Chain speed [mm/in.]	40 / 131
CARRIER RANGE	
Wheeled [metric ton]	18-25
Tracked [metric ton]	16-25
HYDRAULIC SYSTEM	
Maximum operating pressure [Mpa/PSI]	28 / 4061, 35 / 5076
Recommended pump capacity [l/min., gal/min.]	260-370, 69-100
	TimberRite H-16™
	For other adaptations, please contact your local Waratah dealer.
CONTROL AND MEASURING SYSTEM	
OPTIONAL EQUIPMENT	
	280/350 bar feeding pressure
	Color marking
	Stump treatment
	Multi-tree handling (MTH)
	Feed wheels - see brochure
	Chain and saw-bar kits
	Hose kits
	Topsaw
	Processor knives
	Find-end sensor
	Measuring wheels
	Saw bar grease lubrication
	Rotators
	Feed motors
	Saw motors
	Debarking kit
	Guarding
	Uptime kit

