

HTH624C 4x4 LP

With four-wheel-drive and a wide body design, the versatile HTH624C 4x4 LP is built for exceptional delimbing, log handling and productivity. A shorter tilt frame permits loading trucks and improved reach for higher deck piles. Plus, the large delimb capacity allows operators to grab multiple logs clearing the yarder chute, shovel or manipulate larger single logs.

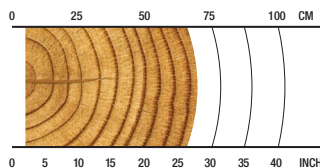
OVERVIEW

Processing roadside; processing under a yarder, clearing the chute; loading and processing where equipment or space is limited.

APPLICATIONS

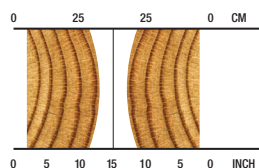
Processing
Loading/processing
Shovel logging

SINGLE STEM RECOMMENDED RANGE



5-71 cm / 2-28 in.

MULTI-STEM RECOMMENDED RANGE (2 LOGS)



5-33 cm / 2-13 in.

SPECS



3560 kg / 7,848 lb.
Net Weight



35 MPa / 5,076 psi
Max Hydraulic Pressure



939 mm / 37 in.
Max Delimb Opening



875 mm / 34 in.
Max Feed Roller Opening



815 mm / 32 in.
Maximum Sawing Capacity



27+ metric ton
Carrier Size

SPECIFICATIONS

DIMENSIONS	
Width, head open (mm/in.)	2000 / 79
WEIGHT	
Excluding link and some options (kg/lb.)	3560 / 7,848
ROTATION	
	360 continuous
DELIMBING	
Delimbing knives	1 fixed/floating, 2 moving*, 1 fixed rear (*option for single lower delimb)
Lower delimb (standard/option (qty))	option, 1
Maximum delimb opening processing arms or felling head grapple opening (mm/in.)	939 / 37
Minimum delimb close	120 / 4.7
DRIVE	
Quantity drive rollers	4
Motor cc - option 1 (drive, fixed)	(837, 500)
Maximum feed speed - option 1 (m/s, ft/s)	5.2 / 17
Maximum roller opening (mm/in.)	875 / 34
Motor cc - option 2 (drive, fixed)	(1048, 630)
Maximum feed speed - option 2 (m/s, ft/s)	4.6 / 15.1
Minimum feed arm diameter (mm/in.)	65 / 2.6
TOP SAW	
Maximum cut diameter (mm/in.)	560 / 22
Length of saw bar (mm/in.)	740 / 29
Chain type (in.)	3/4
Top saw motor displacement	20 cc
CARRIER RANGE	
Metric tons	27+

SPECIFICATIONS

BUTT / FELLING SAW	
Standard Saw	Waratah AT 3/4
Maximum cut diameter (mm/in.)	815 / 32
Length of saw bar (mm/in.)	1015 / 40
Chain type (in.)	3/4
Saw motor	50 cc
Oil tank capacity (L/gal.)	16 / 4.2
HYDRAULIC SYSTEM	
Maximum operating pressure (MPa/psi)	35 / 5,076
Maximum pump capacity (L/min., gal./min.)	320-360 / 85-95
CONTROL AND MEASURING SYSTEM	
	TimberRite H-16
OPTIONAL EQUIPMENT	
Continuous 360-degree rotation	yes
Multi-tree processing	yes
Cast processing upper delimb arms	yes
Steel thumbnail feed rollers	yes
Alpine	yes
Non-aggressive fixed roller	yes

