



H425 | H425HD | H425X

The rugged H425, H425HD and H425X are built to work on your toughest jobs. With a powerful control valve and four roller feed arm geometry, these high performance heads are productive on wheeled or tracked carriers.

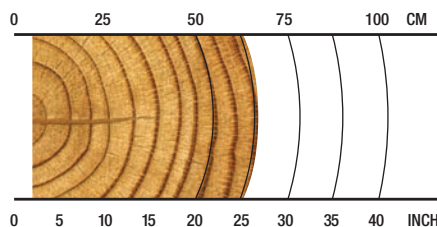
OVERVIEW

Harvesting in late thinnings; regeneration harvesting; tracked and wheeled machine applications.

APPLICATIONS

Softwood harvesting
Mixed stand (hardwood and softwood) harvesting
Multi-tree harvesting

RECOMMENDED RANGE



5-65cm / 2-25.6 in.

SPECS



1360 kg / 2,998 lb.

H425 Weight (Without Rotator & Link)

1390 kg / 3,064 lb.

H425HD Weight (Without Rotator & Link)

1426 kg / 3,143 lb.

H425X Weight (Without Rotator & Link)



28 MPa / 4,061 psi

Maximum Hydraulic Requirements



680 mm / 26.8 in.

Max Upper Delimib Opening



680 mm / 26.8 in.

Max Feed Roller Opening



710 mm / 28.0 in.

Maximum Cutting Capacity



18-25 metric ton

Carrier Size



20-25 metric ton

Carrier Size

H425, H425HD, H425X HARVESTING HEADS

SPECIFICATIONS	H425	H425HD	H425X
DIMENSIONS			
Width, head open (mm/in.)	1720 / 67.7	1720 / 67.7	1720 / 67.7
Width, head closed	1220 / 48.0	1220 / 48.0	1220 / 48.0
Height without rotator and link	1510 / 59.4	1510 / 59.4	1510 / 59.4
WEIGHT			
Excluding rotator, link and some options (kg/lb.)	1360 / 2998	1390 / 3064	1426 / 3143
DELIMBING			
Delimiting knives	4 moving, 2 fixed	4 moving, 2 fixed	4 moving, 2 fixed
Delimiting diameter, tip to tip (mm/in.)	460 / 18.1	460 / 18.1	460 / 18.1
Maximum opening, upper knives (mm/in.)	680 / 26.8	680 / 26.8	680 / 26.8
Maximum opening, lower knives (mm/in.)	710 / 28.0	710 / 28.0	710 / 28.0
DRIVE			
Quantity of drive rollers	4	4	4
Motor cc - option 1	400 / 630-cc motors	400 / 630-cc motors	400 / 630-cc motors
Gross feed force - steel feed wheels (kN)	27	27	27
Motor cc - option 2	500 / 780-cc motors	500 / 780-cc motors	500 / 780-cc motors
Gross feed force - steel feed wheels (kN)	30	30	30
Motor cc - option 3	1014 / 315-cc motors	1014 / 315-cc motors	1014 / 315-cc motors
Gross feed force - steel feed wheels (kN)	25-42	25-42	25-42
Maximum feed speed (m/s)	2.9-7.0	2.9-7.0	2.9-7.0
Maximum roller opening (mm/in.)	680 / 26.8	680 / 26.8	680 / 26.8
Minimum diameter (mm/in.)	50 / 2.0	50 / 2.0	50 / 2.0
TOP SAW			
Maximum cut diameter (mm/in.)		400 / 15.7	400 / 15.7
Length of saw bar (mm)		600	600
Chain type (mm/in.)		10 / 0.404	10 / 0.404
Top saw motor displacement (cc)		14cc	14cc
BUTT / FELLING SAW			
Standard saw	SuperCut 100S with auto chain tensioning	SuperCut 100S with auto chain tensioning	SuperCut 100S with auto chain tensioning
Maximum cut diameter (mm/in.)	750 / 29.5	710 / 28.0	710 / 28.0
Length of saw bar (mm)	900	900	900
Chain type (mm/in.)	0.404	0.404	0.404
Saw motor	19 or 20cc	19 or 20cc	19 or 20cc
Oil tank capacity	9.0 l	9.0 l	9.0 l
CARRIER RANGE			
Wheeled (metric tons)	18-25	18-25	18-25
Tracked (metric tons)	20-25	20-25	20-25
HYDRAULIC SYSTEM			
Maximum operating pressure (Mpa/PSI)	28	28	28
Recommended pump capacity (l/min., gal./min.)	260-340	260-340	260-340
CONTROL AND MEASURING SYSTEM			
	TimberRite H-16	TimberRite H-16	TimberRite H-16
OPTIONAL EQUIPMENT			
Color marking	yes	yes	yes
Stump treatment	yes	yes	yes
Multi-tree-harvesting (MTH)	yes	yes	yes
Debarking feed rollers	no	yes	yes
Steel thumbnail feed rollers	yes	yes	yes
Steel V-profile feed rollers	yes	yes	yes
Steel ribbed feed rollers	yes	yes	yes
Mojpu feed rollers	yes	yes	yes
Chain and saw-bar kits	yes	yes	yes
Hydraulic hose kit	yes	yes	yes
Top Saw	no	yes	yes
Processing knives	yes	yes	yes
Heavy-duty tilt frame	no	yes	yes
Rotator options	yes	yes	yes
Saw bar and chain grease lubrication	yes	yes	yes