



H423

If you're looking for a top producer in a variety of wood sizes, the H423 is well-suited for the task. It has superb delimiting performance in all diameters, outstanding multi-tree harvesting qualities and an excellent power-to-weight ratio, taking productivity to a higher level.

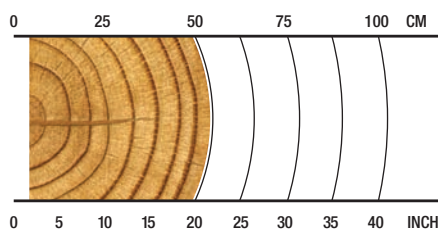
OVERVIEW

Harvesting in early-to-late thinnings

APPLICATIONS

Softwood harvesting
Multi-tree harvesting

RECOMMENDED RANGE



4-50cm / 1.6-19.7in.

SPECS



955 kg / 2,105 lb.
Weight (Without Rotator & Link)



28 MPa / 4,061 psi
Maximum Hydraulic Requirements



560 mm / 22.0 in.
Max Upper Delimb Opening



560 mm / 22.0 in.
Max Feed Roller Opening



580 mm / 22.8 in.
Maximum Cutting Capacity



14-20 metric ton
Carrier Size



13-21 metric ton
Carrier Size

H423 HARVESTING HEAD

SPECIFICATIONS

DIMENSIONS	
Width, head open [mm/in.]	1450 / 57.1
Width, head closed	1140 / 44.9
Height without rotator and link	1330 / 52.4
WEIGHT (kg/lb.)	
Excluding rotator, link and some options [kg/lb.]	955 / 2105
DELIMBING	
Delimiting knives	4 moving, 2 fixed
Delimiting diameter, tip to tip [mm/in.]	420 / 16.5
Maximum opening, upper knives [mm/in.]	560 / 22.0
Maximum opening, lower knives [mm/in.]	570 / 22.4
DRIVE	
Quantity of drive rollers	4
Motor cc - option 1	500 / 315-cc motors
Gross feed force [kN] (steel feed wheels)	23
Maximum feed speed [m/s]	4.8–5.6
Maximum roller opening [mm/in.]	560 / 22.0
Minimum diameter [mm/in.]	40 / 1.6
BUTT / FELLING SAW	
Standard saw	SuperCut 100S with auto chain tensioning
Maximum cut diameter [mm/in.]	580 / 22.8
Length of saw bar [mm]	640 / 750
Chain type [mm/in.]	0.404
Saw motor	19, 20 or 25cc
Oil tank capacity	8.9 l

SPECIFICATIONS

CARRIER RANGE	
Wheeled [metric ton]	14-20
Tracked [metric ton]	13-21
HYDRAULIC SYSTEM	
Maximum operating pressure [Mpa/PSI]	28
Recommended pump capacity [l/min.,gal/min.]	240–280
CONTROL AND MEASURING SYSTEM	
	TimberRite H-16
OPTIONAL EQUIPMENT	
Color marking	
Stump treatment	
Multi-tree-harvesting (MTH)	
Steel thumbnail feed rollers	
Steel V-profile feed rollers	
Steel ribbed feed rollers	
Moipu feed rollers	
Mense V-tec feed rollers	
Chain and saw-bar kits	
Hydraulic hose kit	
Rotator options	
Saw bar and chain grease lubrication	
Adaptation to Dasa or Technion measuring system	
Processor knives	

