

HTH623C LP

With a shorter tilt frame providing improved reach for higher deck piles, the HTH623C LP is a multi-use head built to work in tight spaces. Its large delimb opening allows for grabbing multiple logs or larger single logs, which increases efficiency and productivity for clearing the chute and loading trucks.

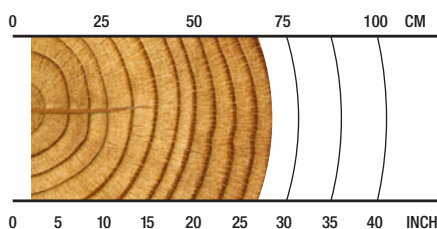
OVERVIEW

Processing roadside; processing under a yarder, clearing the chute; loading and processing where equipment or space is limited.

APPLICATIONS

Processing
Loading/processing
Shovel logging

RECOMMENDED RANGE



5-69 cm / 2-27 in.

SPECS



3140 kg / 6,923 lb.
Net Weight



35 MPa / 5,075 psi
Max Hydraulic Pressure



939 mm / 37 in.
Max Delimb Opening



875 mm / 34 in.
Max Feed Roller Opening



750 mm / 29 in.
Maximum Sawing Capacity



25-34 metric ton
Carrier Size

SPECIFICATIONS

DIMENSIONS	
Width, head open (mm/in.)	2000 / 79
WEIGHT	
Excluding link and some options (kg/lb.)	3140 / 6,923
ROTATION	
	360 continuous
DELIMBING	
Delimbing knives	1 fixed/floating, 2 moving, 1 fixed rear
Maximum delimb opening processing arms or felling head grapple opening (mm/in.)	939 / 37
Minimum delimb close	120 / 4.7
DRIVE	
Quantity drive rollers	3
Motor cc - option 1 (drive, fixed)	(837, 500)
Maximum feed speed - option 1 (m/s, ft/s)	5.2 / 17
Maximum roller opening (mm/in.)	875 / 34
Minimum feed arm diameter (mm/in.)	65 / 2.6
TOP SAW	
Maximum cut diameter (mm/in.)	450 / 18
Length of saw bar (mm/in.)	590 / 23
Chain type (in.)	0.404
Top saw motor displacement	19 cc
CARRIER RANGE	
Metric tons	25-34

SPECIFICATIONS

BUTT / FELLING SAW	
Standard Saw	Waratah AT 3/4
Maximum cut diameter (mm/in.)	750 / 30
Length of saw bar (mm/in.)	900 / 35
Chain type (in.)	3/4
Saw motor	15 cc
Oil tank capacity (L/gal.)	16 / 4.2
HYDRAULIC SYSTEM	
Maximum operating pressure (MPa/psi)	35 / 5,076
Maximum pump capacity (L/min., gal./min.)	320-360 / 85-95
CONTROL AND MEASURING SYSTEM	
	TimberRite H-16
OPTIONAL EQUIPMENT	
No top saw	yes
Continuous 360-degree rotation	yes
Color marking	yes
Stump spray	inquire
Fabricated processing upper delimb arms	yes
Cast processing upper delimb arms	yes
Debarking feed rollers	yes
Steel thumbnail feed rollers	yes
Alpine	yes
Non-aggressive fixed roller	yes

