



# HTH622B SERIES-III

You talked. We listened. And then we made our all-time leader, the 622B, better than ever. The result? You get increased productivity, improved feeding and sawing performance from a machine you've already come to love. It's ready for your toughest jobs, and it's simplified to make maintenance a breeze. That's the new HTH622B Series-III.

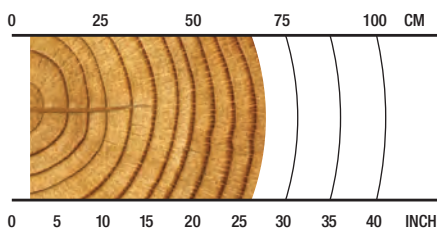
## OVERVIEW

Harvesting in late thinnings or final harvesting of large timber (head-appropriate), hardwood or softwood; some debarking.

## APPLICATIONS

Hardwood harvesting/processing  
Softwood harvesting/processing  
Debarking  
Multi-tree harvesting  
Early thinnings  
Late or final thinnings/clear felling

## RECOMMENDED RANGE



**5-66 cm / 2-26 in.**

## SPECS



**2450 kg / 5,401 lb.**  
Net Weight



**35 MPa / 5,075 psi**  
Max Hydraulic Pressure



**650 mm / 26 in.**  
Max Delimb Opening



**730 mm / 29 in.**  
Max Feed Roller Opening



**750 mm / 30 in.**  
Maximum Sawing Capacity



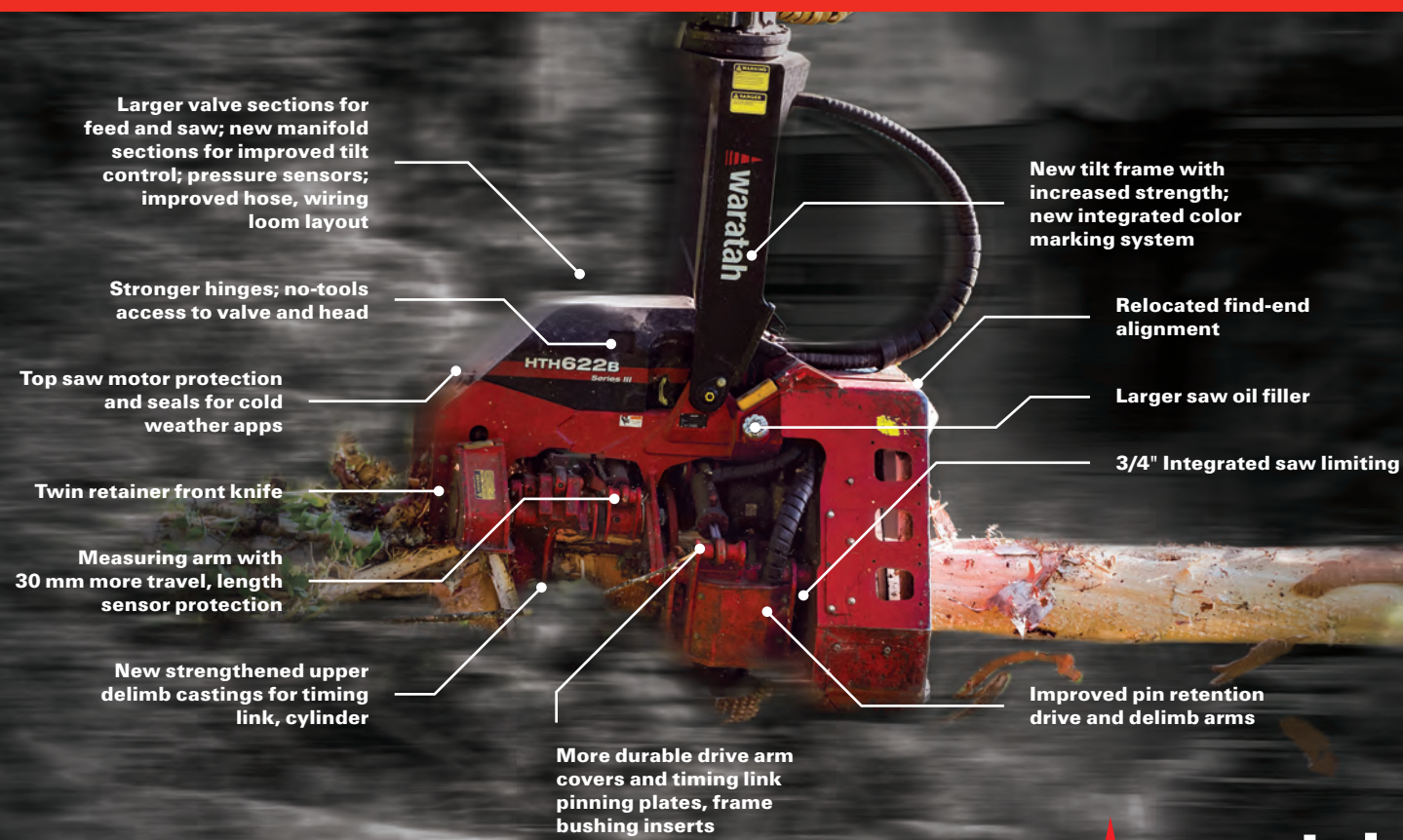
**24-30 metric ton**  
Carrier Size

**SPECIFICATIONS**

<b>DIMENSIONS</b>	
Width, head open (mm/in.)	1700/67
<b>WEIGHT</b>	
Excluding link and some options (kg/lb.)	2450 / 5,401
<b>ROTATION</b>	
	360 continuous
<b>DELIMBING</b>	
Delimiting knives	1 fixed/floating, 2 moving, 1 fixed rear
Maximum delimb opening processing arms or felling head grapple opening (mm/in.)	650 / 26
<b>DRIVE</b>	
Quantity drive rollers	3
Motor cc - option 1 (drive, fixed)	(702,400)
Maximum feed speed - option 1 (m/s, ft/s)	6.5 / 21.3
Maximum roller opening (mm/in.)	730 / 29
Minimum feed arm diameter (mm/in.)	50 / 2
<b>TOP SAW</b>	
Maximum cut diameter (mm/in.)	400 / 16
Length of saw bar (mm/in.)	640 / 25
Chain type (in.)	0.404
Top saw motor displacement	10 cc
<b>CARRIER RANGE</b>	
Metric tons	24-30 metric tons

**SPECIFICATIONS**

<b>BUTT / FELLING SAW</b>	
Standard Saw	SC100
Maximum cut diameter (mm/in.)	750 / 30
Length of saw bar (mm/in.)	820 / 32
Chain type (in.)	0.404
Saw motor	3/4" - 50 cc & .404 - 20 cc
Oil tank capacity (L/gal.)	12 / 3.2
<b>HYDRAULIC SYSTEM</b>	
Maximum operating pressure (MPa/psi)	35 / 5,075
Maximum pump capacity (L/min., gal./min.)	320-360 / 85-95
<b>CONTROL AND MEASURING SYSTEM</b>	
	TimberRite H-16
<b>OPTIONAL EQUIPMENT</b>	
Optional Butt Saw	Waratah AT 3/4"
Maximum cut diameter (mm/in.)	750 / 30
Length of saw bar (mm/in.)	820 / 32
No top saw	yes
Continuous 360-degree rotation	yes
Color marking	yes
Stump spray	inquire
Cast processing upper delimb arms	yes
Debarking feed rollers	yes
Steel thumbnail feed rollers	yes
Alpine	yes
Non-aggressive fixed roller	yes
Steel ribbed feed rollers	yes



Larger valve sections for feed and saw; new manifold sections for improved tilt control; pressure sensors; improved hose, wiring loom layout

Stronger hinges; no-tools access to valve and head

Top saw motor protection and seals for cold weather apps

Twin retainer front knife

Measuring arm with 30 mm more travel, length sensor protection

New strengthened upper delimb castings for timing link, cylinder

More durable drive arm covers and timing link pinning plates, frame bushing inserts

New tilt frame with increased strength; new integrated color marking system

Relocated find-end alignment

Larger saw oil filler

3/4" Integrated saw limiting

Improved pin retention drive and delimb arms