

# FL100

Unmatched strength plus versatility. Meet the FL100. This bonafide jack-of-all-trades owns the steepest of slopes and shovels the heaviest of timber, all while getting better logs to the landing. Simply put, it's a beast. And truly Built to Work™.

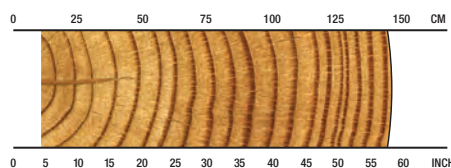
## OVERVIEW

Thinnings, steep slope, shovel logging/hoe-chucking, topping, storm damage, clean-up.

## APPLICATIONS

Shovel logging  
Late or final thinnings/clear felling  
Topping  
Storm damage  
Steep slope

## RECOMMENDED RANGE



**11-147 cm / 4.3-57.9 in.**

## SPECS



**2995 kg / 6,600 lb.**  
Net Weight



**35 MPa / 5,076 psi**  
Max Hydraulic Pressure



**1470 mm / 57.8 in**  
Max Grapple Opening



**1000 mm / 39.3 in.**  
Maximum Sawing Capacity



**30+ metric ton**  
Carrier Size



# SPECIFICATIONS

## DIMENSIONS

Height, to boom pin (mm/in.)	2420 / 95.3
Width, arms open (mm/in.)	2270 / 89.4
Depth, arms open (mm/in.)	1995 / 78.5
Weight (kg/lb.)	2995 / 6,600

## CUTTING

Saw bar (mm/in.)	1140 / 45
Saw motor	50 cc
Chain tension	Auto standard
Maximum cut (mm/in.)	1000 / 39.3
Chain (mm/in.)	19 / 0.75 pitch
Chain oil capacity (L/gal.)	35 / 9.2

# SPECIFICATIONS

## ROTATOR

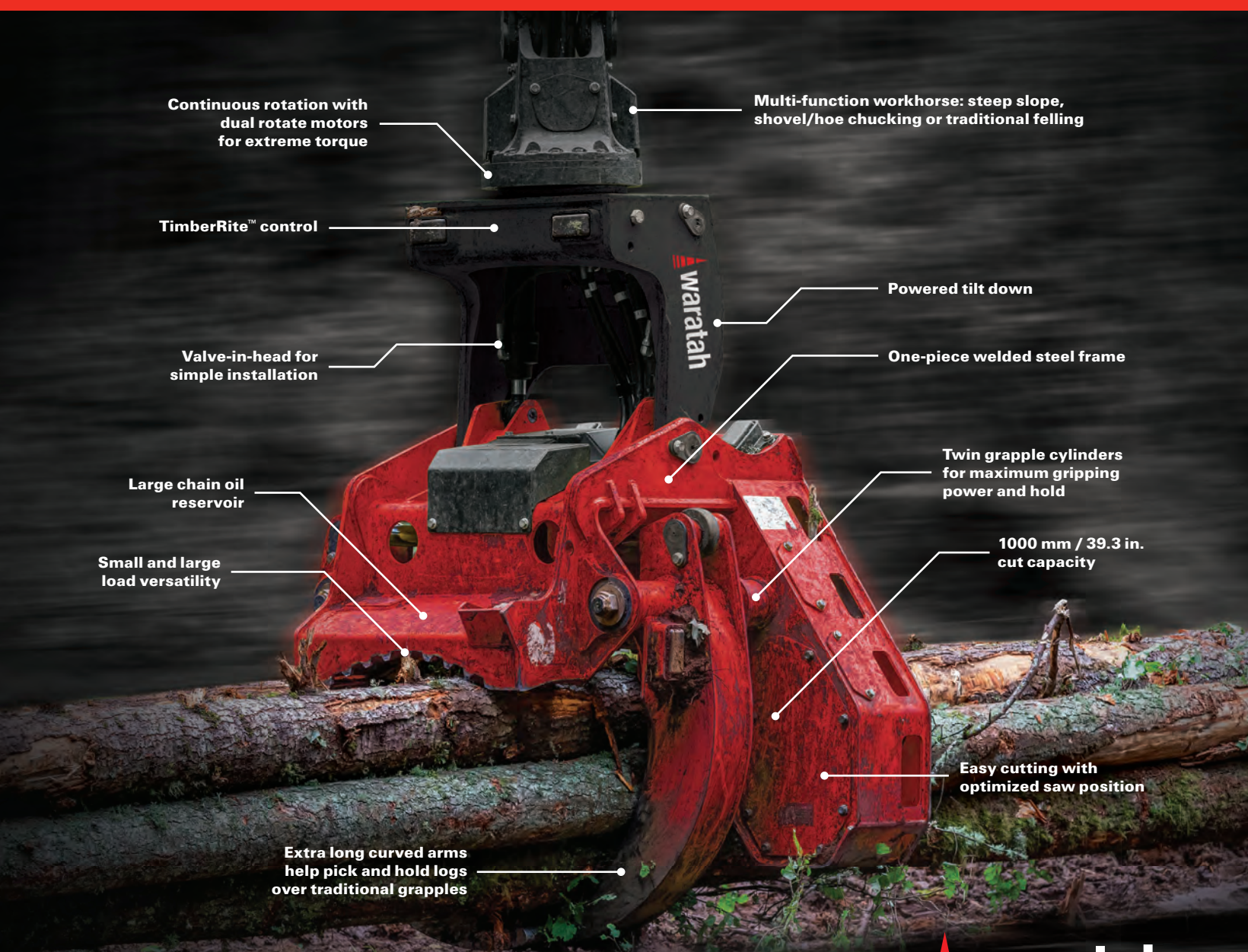
Rotation	Continuous
Rotate motors	2

## GRAPPLE ARMS

Maximum opening (mm/in.)	1470 / 57.8
Minimum closed diameter (mm/in.)	110 / 4.3
Grapple capacity (m <sup>2</sup> /ft <sup>2</sup> )	0.78 / 8.4

## CYLINDERS

Grapple arms (mm/in.)	2 x 110 / 2 x 4.3 cushioned
Tilt (mm/in.)	2 x 90 / 2 x 3.5



Continuous rotation with dual rotate motors for extreme torque

TimberRite™ control

Valve-in-head for simple installation

Large chain oil reservoir

Small and large load versatility

Multi-function workhorse: steep slope, shovel/hoe chucking or traditional felling

Powered tilt down

One-piece welded steel frame

Twin grapple cylinders for maximum gripping power and hold

1000 mm / 39.3 in. cut capacity

Easy cutting with optimized saw position

Extra long curved arms help pick and hold logs over traditional grapples